

FALSE ALARM PREVENTION STARTS HERE:

Any person who has keys to your property **MUST** be able to operate the alarm.

Contractors, house cleaners, employees, friends, and others who may enter your property must have your code to operate your system and they must be practiced in its use.

Simply telling someone how to operate the system is not sufficient. Make sure everyone who opens your premises has actually armed and disarmed your system successfully in a practice session.

Close and Lock **ALL** perimeter doors and windows.

Always be sure that doors and windows are secured such that they cannot blow open in the wind, even if a particular opening is not directly connected to the system.

For instance, a window that blows open can admit birds, trash or wind which can disturb motion sensors, even if that window is not directly connected to the system.

Every windy day police respond to alarm signals that are caused by nothing more than a door blown open in the wind.

Be sure electric power to your system is uninterrupted when closing.

Many commercial establishments turn off circuit breakers at the end of the day. Be sure that this procedure does not shut off the power to your alarm system.

Modern security systems are designed with backup power supplies, but these batteries will not hold up the system during an entire closed period. Eventually, the batteries will die and signal an alarm with the last of its power.

Never arm the system when the power to it is interrupted.

If you make changes in your premises, call your alarm company for an inspection.

Changes in the interior of your premises can affect your security system, making it more vulnerable to false alarms. Worse still, changes can often impair detection devices which may allow for an intrusion to occur undetected. Avoid these problems by working with your alarm service provider to make needed changes before a false alarm (or an intrusion) can occur.

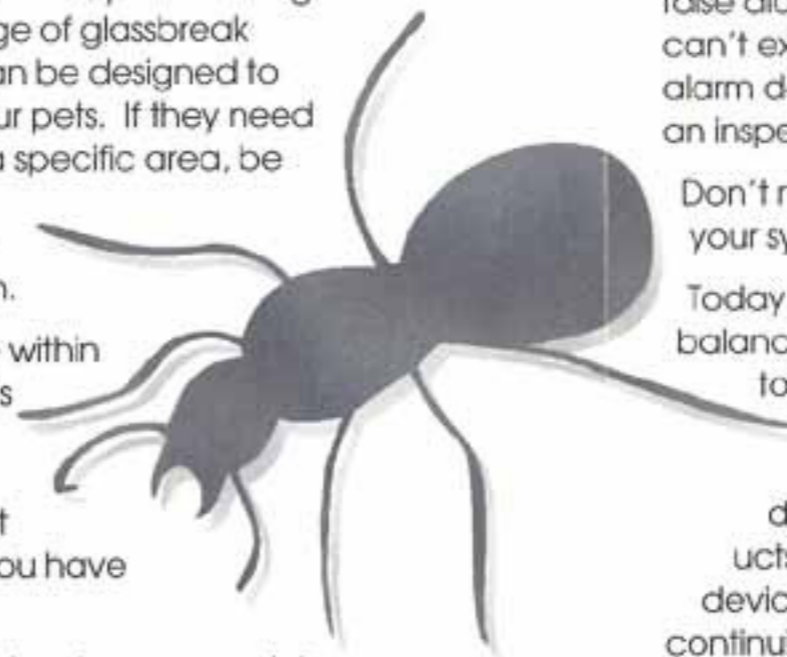
Keep animals and insects under control.

Pets and other domestic animals can often cause problems if they wander into areas covered by motion detectors, or if they knock things over within the range of glassbreak sensors. Systems can be designed to accommodate your pets. If they need to be confined to a specific area, be sure they can't wander into areas they shouldn't be in.

Rodents can move within a motion detector's pattern, or eat alarm wire insulation. Consult a pest control agency if you have this problem.

Birds can be a problem in commercial establishments. If a bird flies in your premises during the day, be sure it's gone when you close up for the night. If a pigeon flies into the pattern of a motion detector when the system is armed, it will cause a false alarm.

Roaches and other insect infestations can cause problems as well. Bugs can occupy the insides of alarm equipment, causing a false alarm. A roach inside an infrared motion detector can appear like a freight train as it crawls by, and will cause an alarm.



Cooperate with your alarm dealer in solving problems.

If you make a mistake in operating your system, or if you have difficulty in some aspect of its operation, call your alarm company!

For instance, time delays can be shortened or lengthened. Additional sounders can make your alarm easier to hear. Codes to operate the system can be complex or simple. A motion detector in an inconvenient location can be moved.

If you experience a false alarm that you can't explain, call your alarm dealer and arrange for an inspection and service as necessary.

Don't make repairs, alterations or additions to your system yourself — call your alarm dealer.

Today's security system is a sophisticated, balanced device. Using inferior quality detectors, contacts and other equipment especially without trained installation technique is asking for trouble. Your dealer is knowledgeable about the products and systems available and selects the devices he/she feels will provide you with continuing reliable service.

This brochure is brought to you as a public service of the California Alarm Association, a State Chartered Chapter of the National Burglar & Fire Alarm Association.

For additional information or to verify information about an alarm company, write to:

CALIFORNIA ALARM ASSOCIATION
1148 FOURTH STREET, SUITE 115
SANTA MONICA, CA 90403

